



OWC 2023

ORIENTEERING WORLD CUP

ČESKÁ LÍPA, CZECHIA

2 – 6 AUGUST ROUND 2

BULLETIN 1/2

WELCOME

Dear sports fans,

Orienteering has a great tradition in the Liberec Region. The art of running through unfamiliar terrain, using a map or azimuth, requires not only perfect physical preparation of the runners but also perfect orienteering skills. I am glad that athletes from our region achieve top results in Orienteering, not only on the Czech but also on the international scene. This is evidenced by the placement of our youth competitors at the X. Games of the Summer Olympics for Children and Youth, which took place in June 2022 in Olomouc. Runners from the Liberec Region dominated the Sprint, Middle distance and Sprint Relay and won the most valuable medals.

I am pleased that after the World Orienteering Championships in 2021, a world-class event will again be held in our region, with the support of the Liberec Region. From 2 to 6 August 2023 the localities of Českolipsko and Kokořínsko will become the venues for the 2nd Round of the Orienteering World Cup 2023. Again, the Event Director will be Jan Píček, who showed great commitment at WOC 2021. Thanks to him and his team, everything went without the slightest problem. I really appreciate his work.

I now wish all the organizers, led by Jan Píček, the best possible conditions: that the event will again be without major complications, not limited by strict anti-pandemic measures, and will be an attraction for many Czech and foreign elite runners and orienteering fans.

Dan Ramzer

Deputy Governor of the Liberec Region



Dear orienteering fans,

It is an immense honour to invite you to Česká Lípa, the tourist crossroads of northern Bohemia, a town that lies in the heart of the Macha Region and is the gateway to the Lusatian Mountains. In August 2023, Česká Lípa will become the centre of the Orienteering World Cup and has a lot to offer not only to runners, but also fans.

The history of our town dates back to the 13th century. It is essentially connected with the Lipý water castle, the ruins of which still stand in the centre of Česká Lípa today. During the 9 centuries of its existence Česká Lípa has gone through many turbulent events, has survived devastating fires, and became a centre of trade and textile printing. It was influenced by the displacement of Jewish and German inhabitants, and a huge influx of new inhabitants when Uranium mining began. Česká Lípa is a city where I have lived all my life and I feel that history has left its marks on it. Gradually, however, it gathers itself, heals and earns its rightful place on the map.

Česká Lípa offers something to everyone. The biggest advantage is its location – so-called "in the centre of the action". From Česká Lípa you can easily get to Mácha Lake, but also to Ještěd. A stone's throw away are the Lusatian Mountains, the Jizera Mountains, and also the Giant Mountains, and Kokořínsko is not far away. Fans of many summer and winter activities will find their place here. There are many cycle paths, single tracks and also ski lifts and slopes. Pedestrians will not be impoverished either; they can go to the balmy forests, to the rocks, visit some of the castles and when it is really warm, there are also plenty of swimming pools.

But the city is made up mainly of people, and we have a lot of good and skillful ones in Česká Lípa. And not only athletes, whom we try to support in the long term. I look forward to your visit. Let's come and prove it!

See you in Česká Lípa!

Jitka Volfová
Mayor of Česká Lípa



TABLE OF CONTENTS

WELCOME	2
WORLD CUP 2023	5
SECTION 1: ORGANISATION	5
SECTION 2: PROGRAMME	7
SECTION 3: VENUE, ACCESS AND TRANSPORT	7
SECTION 4: EVENT CENTRE (OFFICE)	9
SECTION 5: REGISTRATION	9
SECTION 6: ACCOMMODATION AND FOOD	12
SECTION 7: EMBARGOED AREAS	12
SECTION 8: TRAINING OPPORTUNITIES	13
SECTION 9: CLASSES AND PARTICIPATION RESTRICTION	13
SECTION 10: MEDIA	15
SECTION 11: RACE INFORMATION	15
SECTION 12: EVENT INFORMATION	16
SECTION 13: PRIZE MONEY	17
SECTION 14: PUBLIC RACES	17

WORLD CUP 2023

The Orienteering World Cup 2023 (OWC) will consist of the following 10 competitions.

Date	Format	Event	Location
27 April	Long Distance	World Cup Round 1	Østfold, Norway
29 April	Middle Distance		
30 April	Relay		
2 August	Sprint	World Cup Round 2	Česká Lípa and Ždírec, Czechia
3 August	Sprint Relay		
5 August	Middle Distance		
6 August	Long Distance		
3 - 7 October	Sprint	World Cup Round 3 with European Championships	Verona, Italy
3 - 7 October	Knock-Out Sprint		
3 - 7 October	Sprint Relay		

SECTION 1: ORGANISATION

OWC Round 2 in 2023 is being organised by the Czech Orienteering Federation.

1.1 ORGANISING COMMITTEE

Event Director	Jan Pícek	director@wcup.cz
Event Secretary	Dominika Pachnerová	info@wcup.cz
Event Office	Jana Kubátová	info@wcup.cz
Sport Director	Daniel Wolf	sport@wcup.cz
Arena	Matěj Burda	arena@wcup.cz
Marketing & Media	David Procházka	marketing@wcup.cz
Technology	Lukáš König	it@wcup.cz
Chief Cartographer	Aleš Hejna	ales.hejna@olles.cz
Czech O-Tour Director	Dominika Plochová	info@o-tour.cz

1.2 EVENT ADVISERS

IOF Senior Event Adviser:	Jerzy Antonowicz (POL)
National Controller:	Jan Fiala (CZE)

1.3 CONTACT INFORMATION

Official information: <https://eventor.orienteering.org/Events/Show/7247>

Email: info@wcup.cz

Website: www.wcup.cz

Event secretary

Dominika Pachnerová

E-mail: info@wcup.cz

Phone number: +420 731 108 782

Event Office

Jana Kubátová

E-mail: info@wcup.cz

Phone number: +420 739 598 691

Contact for media

Tereza Vlčková

E-mail: media@wcup.cz

Phone number: +420 606 668 793

Other contacts

Czech Orienteering Federation

Zátopkova 100/2

Praha 6 - Břevnov

169 00 Czechia

www.orientacnisporty.cz

csos@orientacnisporty.cz

Jiří Šubrt, Secretary General +420 737 011 553

Social media

FB: [@wcup.cz](https://www.facebook.com/wcup.cz)

IG: [@wcup_czechia](https://www.instagram.com/wcup_czechia)

Youtube: [Český svaz orientačních sportů](#), [IOF Orienteering](#)

Twitter: [@IOFOrienteering](https://twitter.com/IOFOrienteering)

SECTION 2: PROGRAMME

The preliminary programme for Orienteering World Cup 2023, Round 2 is as shown in the table below. The final programme will be presented in Bulletin 3 and at www.wcup.cz when the agreements for live TV are settled.

Day	Date	Event	Location
Monday	31 st July	Arrival	Česká Lípa
Tuesday	1 st August	Model Sprint + technical model	Česká Lípa
Wednesday	2 nd August	Sprint	Česká Lípa
Thursday	3 rd August	Sprint Relay	Česká Lípa
Friday	4 th August	Model Middle & Long	Kokořínsko
Saturday	5 th August	Middle	Ždírec
Sunday	6 th August	Long	Ždírec

SECTION 3: VENUE, ACCESS AND TRANSPORT

3.1 VENUE

ČESKÁ LÍPA

Česká Lípa is a town in the [Liberec Region](#) in the northern part of [Czechia](#). It lies about 38 kilometres west of Liberec and 100 kilometres north of Prague. The town has about 37,000 inhabitants nowadays and was built near a ford on the Ploučnice river. The highest point of the municipal territory is Špičák with an altitude of 459 metres. The current territory of the town was permanently settled around the 13th century. The modern urban development of the town was influenced by industrial production and uranium mining in the region. Residential neighbourhoods consisting of large amounts of prefabricated housing were built on the outskirts, while the town centre was preserved and declared as an urban monument zone.

Many monuments remind us of the rich history of the city. For example the Lipý Water Castle, built in the 13th century, where many cultural events take place in its ruins today. Other sights include the former Augustinian Monastery, founded by Albrecht von Wallenstein in 1627, with the Loretan Chapel. There are also a number of churches, historic townhouses and the neo-renaissance town hall or the fountain on T. G. Masaryk Square from 1837, which is fully functional during summer even now.

ŽDÍREC - KOKOŘÍNSKO

Beautiful natural region of rocks, small lakes and villages full of traditional architecture. Kokořínsko is located near Doksy, and it is known for its romantic gorges and unique sandstone towers, gates, windows and other formations. The greatest feature of this area is the castle Kokořín, placed above the Kokořín pit, main pit of the Kokořín area. The pit is 14 km long and it is a natural reservation with a range of natural attractions. To name the most famous: Pokličky –mushroom formed rock columns, approximately 2 km

away from castle Kokořín. The Cinibulkova trail will guide you through the most beautiful places, going from Romanov to Pokličky. Geologically, Kokořínsko belongs to the Bohemian Cretaceous Basin. That is formed of mesozoic sediments, mainly coarse-grained sandstone. Sandstone sedimented here 80–90 millions years ago, when the area was flooded by a prehistoric sea. There are deep canyon-shaped valleys in the sandstone plateaus, where numerous rock towers have formed on the edges through weathering.

3.2 COMPETITION ARENAS

Sprint and Sprint Relay

These will take place at Česká Lípa (Event Centre).

Middle and Long distance

These will take place at Ždírec, situated in Česká Lípa district, 26 km (26 min of driving) from the Event Centre in Česká Lípa.



3.3 TRANSPORT / TRAVEL OPPORTUNITIES

Teams are encouraged to use their own transport throughout the whole OWC. We recommend transport by car/minibus. Nearest major airport is [Václav Havel Airport Prague](#) (100 km to Event Centre). It is also possible to arrive in České Lípa by [train](#) (station Česká Lípa hl. n.).

SECTION 4: EVENT CENTRE (OFFICE)

ČESKÁ LÍPA, Municipal stadium near Ploučnice river

Stadium with an athletics track with an artificial surface and with the possibility of running all athletic disciplines. The stadium area includes grass fields, a slag field, an asphalt basketball court and, of course, changing rooms and showers.

The Sprint distance model will take place close to the Event Centre.

GPS Coordinates: [50.6829072N, 14.5289892E](https://www.google.com/maps/place/50.6829072N,14.5289892E)

Web: <https://sportlipa.cz>

Address: Boženy Němcové 1711, Česká Lípa
Czechia



SECTION 5: REGISTRATION

5.1 TEAM REGISTRATION

All entries can only be made in IOF Eventor. The entry form will be available from 1st January 2023 on: <https://eventor.orienteering.org/Events/Show/7247>

- The event start date is 2nd August 2023.
- The deadline for **Team Size Entry** is 2nd June 2023 (- 2 months).
- The deadline for **Team Names Entry** is 23rd July 2023 (- 10 days).
- The deadline for **Late Entries, Changes of Team Size or Team Names for accreditation** is 1st August 2023 at 12:00

	1 January at 00:01 Start of entry	2 June at 23:59 Team size	23 July at 23:59 Team names	23 July at 23:59 Entries	1 August at 12:00 Late entries and changes deadline
					2 August Event start date
Team size entry periods	Team size	+ 20% (80% refund)	+ 50% (50% refund)	EVENT	
Team name entry periods	Team names		+ 10 EUR		
Payment schedule	Payment			Pay/refund changes	

Team Size Entry

The following information shall be given:

- Team manager (chosen from list in IOF Eventor)
- Number of Team athletes (Men and Women)
- Number of Team officials
- Number of Team athletes in the individual races; Federation Quota will be published by the IOF
- Number of teams for the relays
- Ordering of rental SIAC cards

There is no maximum number of officials per team.

Team Names Entry

The following information shall be given:

- Name of each Team athlete by selecting from federation members in IOF Eventor

Competition Entries

Names of the competitors and, if required, their starting group, shall be entered in IOF Eventor, on the day before an individual or relay competition.

Late entries, changes of team size or team names

Late Entries and changes will be accepted, if possible until **1st August 2023 at 12:00**. No late entries or changes will be accepted after that date. Late entries and changes will always have a defined extra cost (surcharge).

Entry changes

- **3rd June - 23th July 2023** – surcharge 20% on new entries, withdrawals receive a 80% refund.
- **24th July - 1st August 2023** – surcharge 50% on new entries, withdrawals receive a 50% refund.

- **After 1st August 2023 12:00 CET** – no other entries or changes will be accepted.

Name changes

- **24th July - 1st August 2023** – surcharge 10 EUR
- Changes of names for competition according to IOF rules, no fee.

Late entries and changes will always be treated equally, and must be communicated directly to the organiser on info@wcup.cz. The organiser makes the changes in IOF Eventor after deadlines.

5.2 ENTRY FEE DESCRIPTIONS

Category		Fee
Accreditation	Accreditation fee - team officials (see note 1)	80 EUR
Athletes	Entry fee - complete bundle (see note 2)	300 EUR
SIAC card rent	Per person per week (see note 3)	10 EUR
IOF Guests	IOF Guests, Partners and Sponsors	no accreditation fee
IOF Family	Per person	40 EUR
Media	Per person	no accreditation fee

Notes:

1. Accreditation fee for team officials covers model event, parking at the arena and a set of competition maps.
2. Package includes: Starting fee for all competitions and training and competitions maps.
3. The pre-ordered rental SIAC cards will be handed out in the Event Office as a part of the accreditation. A team manager shall return all rented SIAC cards at the Event office after the last race. Any missing or lost SIAC-card will be charged with a fee - 60 EUR. SIAC cards must be ordered with team size entry (2nd June 2023).

5.5 PAYMENTS

Payment must be credited to the organizer's account no later than 10 days before the event starts – 23rd July 2023, otherwise competitors will not be allowed to start. Invoices will be issued at the beginning of June 2023. All bank costs must be covered by the payer.

Payment details:

Bank: MONETA Money Bank, a. s., Vyskočilova 1442/1b, 140 28 Praha 4 - Michle, Česká Republika
Account number: 244499346/0600
IBAN: CZ18 0600 0000 0002 4449 9346
BIC (SWIFT): AGBACZPP

Account owner: Český svaz orientačních sportů, Zátopkova 100/2, 169 00 Praha 6 - Břevnov
Invoice reference: invoice number

SECTION 6: ACCOMMODATION AND FOOD

As the area is a very popular summer holiday destination, **we strongly recommend that you book your accommodation as soon as possible. Booking must be done by 28th February 2023. After this deadline we cannot guarantee availability of preferred accommodation type and price.**

6.1 ACCOMMODATION FOR TEAMS

Category	Type of accommodation	Price starting from
A	**** hotels	90 EUR/person incl. breakfast
B	*** hotels	50 EUR/person incl. breakfast
C	Apartments	125 EUR/apartment
D	Guest house	40 EUR/person incl. breakfast

Notes: The exact price will be discussed for each specific order.

- More information and booking: accommodation@wcup.cz and on <https://wcup.cz/accommodation>

6.2 FOOD

In the quarantine and the team zone in the arenas, we offer refreshments and water. Hot and cold food and drinks will be for sale in the arenas. Also vegetarian food will be offered at arenas.

SECTION 7: EMBARGOED AREAS

7.1 EMBARGOED AREAS INFORMATION

According to the IOF Competition rules (§ 26.5), embargoed areas are forbidden for all potential OWC Round 2 athletes, team officials and other persons, who, through knowledge of the terrain, may influence the results of the competitions. All embargoed areas are 'strict embargo'. More information and maps are available on <https://eventor.orienteering.org/Events/Show/7247> and the website www.wcup.cz.

Embargoed areas:

7/1 - Ždírečný důl (Middle & Long)

Road Nedamov - Ždírec allowed to pass through.

Road Ždírec - Blatce - Vlkov allowed to pass through.

Road no. II/259 Dubá - Vlkov allowed to pass through.

7/2 - Česká Lípa (Sprint & Sprint Relay)

Road no. I/9 allowed to pass through.

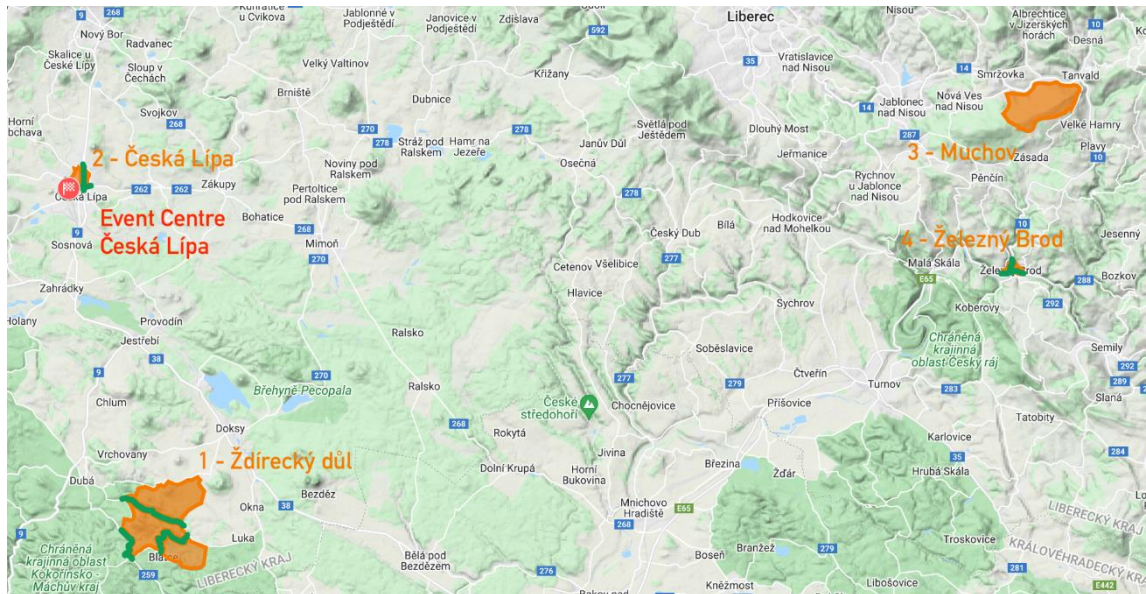
Road no. II/262 allowed to pass through.

7/3 - Muchov (Reserve area Middle & Long)

7/4 - Železný Brod (Reserve area Sprint & Sprint Relay)

Road no. I/10 allowed to pass through.

Road no. II/288 allowed to pass through.



7. 2 INTERACTIVE MAP

[Link to interactive map.](#)

SECTION 8: TRAINING OPPORTUNITIES

Almost all relevant training terrains are in nature protected areas. Therefore, all training activities shall be coordinated with the organisers. All information about training maps and areas and about relevant competitions in Czechia can be found on <https://wcup.cz/training>. For questions or any further training stay arrangements, don't hesitate to contact (trainings@wcup.cz).

SECTION 9: CLASSES AND PARTICIPATION RESTRICTION

9.1 COMPETITION RULES

The complete rules for the World Cup 2023 consist of:

- Orienteering Competition Rules valid from 2023
- World Cup Special Rules 2023

Latest versions of the Rules are found on the [IOF webpage](#). Runners are awarded World Cup points as per 2023 World Cup Special Rules.

9.2 CLASSES AND ENTRY REGULATIONS

There are two classes, Women and Men. Participation restrictions, classes and qualification system will follow the World Cup Special Rules for 2023.

9.3 ANTI-DOPING CODE

Doping is strictly forbidden and the organisers of the Orienteering World Cup 2023, Round 2 are dedicated to supporting the anti-doping authorities in their work. Doping tests are always carried out in accordance with the procedures described in the WADA International Standard for Testing. The IOF Anti-Doping Code and Rules and the World Anti-Doping Code 2015 apply as of 1st January 2015. Athletes who are selected for the doping tests must bring an official identification (with photo) to the doping test area. The athlete should also bring along their therapeutic use exemption (TUE) if applicable. In general, it is advisable that the athletes bring along their ID to all the competitions and events.

For more information, please consult: [Anti-Doping](#)

9.4 INSURANCE

The organisers decline any liability that might occur through participation in the IOF World Cup Events and Trainings. Each person participates at their own risk and is responsible for their own insurance coverage (illness and accident).

There are no other peculiarities for this event.

9.5 CLIMATE & HAZARDS

The average minimum temperature (usually the minimum temperature is noted during the night) in Česká Lípa in August is 13.8°C. The average maximum daytime temperature lies around 24.0 °C. The amount of rain in August is normal with an average of 83 mm. It rains on average a total of 13 days. Wild bees may be encountered in the areas. Ticks, carrying Tick-borne encephalitis and Lyme-disease are present.

9.6 VISA

According to the current regulations citizens of some countries must obtain a visa in order to enter Czechia. Please note that conditions of entry to Czechia can change and all Orienteering World Cup participants are advised to keep up-to-date of the current situation. Please visit https://www.mzv.cz/jnp/en/information_for.aliens/index.html

9.7 ATHLETE LICENCE

All participants need a valid IOF Athlete licence. To have a valid licence, the athlete needs to sign an athlete licence form and pay an annual fee of 30 EURO. If the athlete has signed the form in previous years

they don't need to sign a new form. Payments of the annual licence fee is done in IOF Eventor, please consult the IOF Eventor Guide regarding this.

To find the rules and forms and more information, please consult: [Athletes licence](#)

If you have questions about IOF Athlete licence, please contact the IOF Office on iof@orienteering.sport.

SECTION 10: MEDIA

Journalists, photographers, camera personnel and social media content creators are welcomed.

All registrations will be made in IOF Eventor. Further information, instructions and registration deadlines will be part of Bulletin 3.

More information: Tereza Vlčková (media@wcup.cz, +420 606 668 793)

SECTION 11: RACE INFORMATION

11.1 PUNCHING AND TIMING

SPORTident Air+ punching will be used for all competitions. OWC participants are requested to use their own SIAC-cards as primary SIAC during the event. The organiser will offer SIAC cards for rent, they can be booked through IOF Eventor as a service with team size entry (2nd June 2023). Plus there will be a back-up SIAC card provided by the organiser to every competitor, as a reserve in case of primary SIAC failure. Detailed punching procedure will be presented in Bulletin 4.

11.2 GPS TRACKING

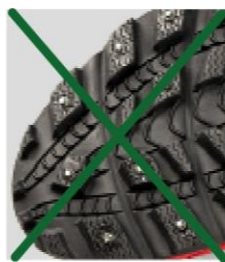
In every race, competitors may be asked to carry a GPS tracking device. It has to be carried on the back of the competitor in an elastic harness.

GPS tracking will be used for live TV production, arena production on the big video screen and live on-line transmission.

Detailed information about allocation and picking up the GPS units will be presented in Bulletin 4.

11.3 CLOTHING AND FOOTWEAR

There are no regulations regarding clothing. **Shoes with metal dobbs and spikes are forbidden for all races and training sessions!**



NO DOBBS

SECTION 12: EVENT INFORMATION

12.1 TERRAIN

SPRINT & SPRINT RELAY: The terrain consists of an irregular network of paved streets, a historic monastery, a small fortress, school yards and playgrounds and grassy parkland.

Visibility: very good.

Runnability: very good.

MIDDLE & LONG: Typical continental sandstone terrain at Kokořínsko, altitude 280 - 474 m. Its intricate morphology consists of plenty of valleys and re-entrants crowned by sandstone rock formations.

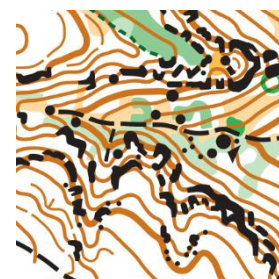
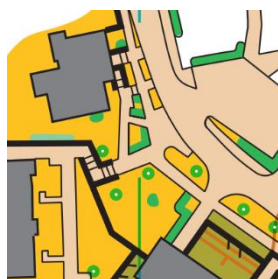
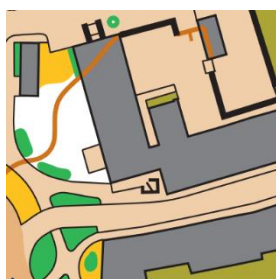
Visibility: Mostly grown pine or beech forest, where visibility is generally very good - limited in areas of young pine plantations and areas of mixed forest.

Runnability is generally very good, though often significantly limited by the steepness of the slopes. In some parts, running is also limited by high blueberries (often present at plateaus and also in some slopes) and in thickets of various ages.

12.2 MAPS

Discipline	Scale / contour interval	Specification	Map makers
Sprint	1 : 4 000 / 2 m	ISSprOM 2019-2	Aleš Hejna, Radek Novotný
Sprint Relay	1 : 4 000 / 2 m	ISSprOM 2019-2	Aleš Hejna, Radek Novotný
Middle distance	1 : 10 000 / 5 m	ISOM2017-2	Zdeněk Sokolář, Aleš Hejna, Jan Drbal, Tom Novák
Long distance	1 : 15 000 / 5 m	ISOM2017-2	Zdeněk Sokolář, Aleš Hejna, Jan Drbal, Tom Novák

Map samples



Sprint, Sprint Relay

Middle distance, Long distance

12.3 PRELIMINARY COURSE DETAILS

Discipline	Class	Winning time (min)	Preliminary length (km)
Sprint	Women	14:30	3,6
	Men	14:30	4,0
Sprint relay (per leg)	Women	15:00	3,8
	Men	15:00	4,3
Middle distance	Women	35	4,5
	Men	35	5,2
Long distance	Women	80	8,6
	Men	95	12,6

Climbing for forest races is estimated to be approximately 6–8% of the course lengths.

SECTION 13: PRIZE MONEY

Prize money in the World Cup 2023 is distributed according to the following schedule. All sums are set in Euro.

Place	Individual race	Relay race	Total Individual World Cup
1	1000	1000	5000
2	700	700	2000
3	400	400	1000
4	200		600
5	200		500
6	200		400

SECTION 14: PUBLIC RACES

There will be 4 stages (3 forest disciplines and one sprint) from 3rd to 6th August 2023 in OWC 2023 round 2 terrains. More detailed information will be published on www.wcup.cz and www.o-tour.cz.

OWC 2023

ORIENTEERING WORLD CUP

ČESKÁ LÍPA, CZECHIA

2 – 6 AUGUST ROUND 2

